

### Description

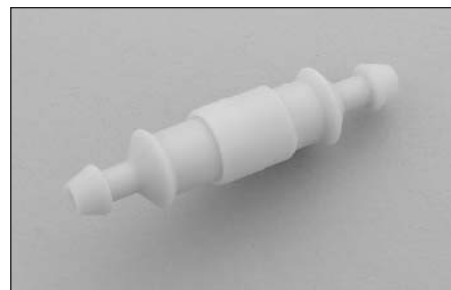
- For 1/4" x 7/8" to 1/4" x 1-1/4" fuses
- Accepts #16 to #12 AWG copper wire
- Simple crimp assembly
- "Snap-Lock" feature provides strong positive union
- High visibility yellow color
- Recommended crimp tools:
  - Thomas & Betts – WT-1300
  - Radio Shack – 64-409
  - General Electric – U.S. & Metric Electrical Terminal Tool
- UL flammability rating 94 V2

### Environmental Data

- Pull Force: 5 pounds minimum to separate fuseholder housing with fuse inside

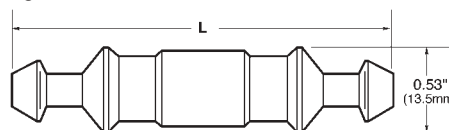
### Ordering

- Specify product code, option code and packaging code



### Dimensions

Drawing Not to Scale



Fuse Length	"L" with fuse installed
7/8"	2.100 Max.
1"	2.250 Max.
1-1/4"	2.420 Max.

SPECIFICATIONS		
Product Code	Voltage Rating AC	Current Rating AC
HHB	32V	30A

Component	Material
Body	Nylon
Crimp	Copper Tin-Plated

PACKAGING CODE	
Packaging Code	Description
Blank	10 pieces of fuseholders packed into a carton
BK	1,000 pieces of fuseholders packed into a cardboard shelf package

OPTION CODE	
Option Code	Description
Y408	#14 AWG insulated wire with 8 inch yellow leads
R408	#14 AWG insulated wire with 8 inch red leads
B408	#14 AWG insulated wire with 8 inch black leads
Y419	#14 AWG insulated wire with 19 inch yellow leads
R419	#14 AWG insulated wire with 19 inch red leads
B419	#14 AWG insulated wire with 19 inch black leads