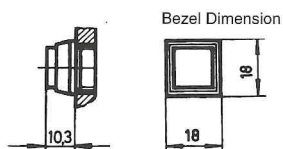
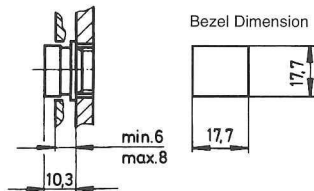


**Square tapered bezel style**



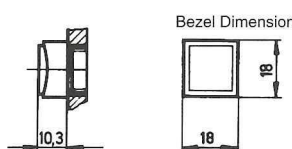
	Contact Block	Bezel
	1NO+1 NC	Black
<b>Momentary Switch</b>	Base	502000
	1	502100
	2	502200
	3	502300
	4	502400
<b>Maintained Switch</b>	Base	512000
	1	512100
	2	512200
	3	512300
	4	512400
<b>Indicator Lamp</b>		552000

**Square concealed bezel style**



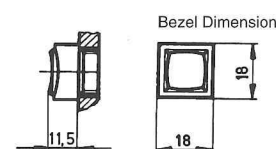
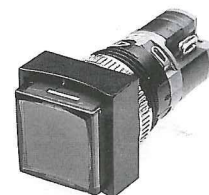
	Contact Block	Bezel
	1NO+1 NC	Black
<b>Momentary Switch</b>	Base	502002
	1	502102
	2	502202
	3	502302
	4	502402
<b>Maintained Switch</b>	Base	512002
	1	512102
	2	512202
	3	512302
	4	512402
<b>Indicator Lamp</b>		552037

**Square flat lens exposed bezel style**



	Contact Block	Bezel
	1NO+1 NC	Black
<b>Momentary Switch</b>	Base	502008
	1	502108
	2	502208
	3	502308
	4	502408
<b>Maintained Switch</b>	Base	512008
	1	512108
	2	512208
	3	512308
	4	512408
<b>Indicator Lamp</b>		552008

**Square concave lens exposed bezel style**



	Contact block	Bezel
	1NO+1 NC	black
<b>Momentary Switch</b>	Base	502008
	1	502108
	2	502208
	3	502308
	4	502408
<b>Maintained Switch</b>	Base	512008
	1	512108
	2	512208
	3	512308
	4	512408
<b>Indicator Lamp</b>		552008

**Lens 14 x 14**

	Opaque	Transparent
white	462013	463013
yellow	462113	463113
green	462213	463213
blue	462313	463313
red	462413	463413
black	462513	
orange	462613	463613

**Lens 18 x 18**

	Opaque	Transparent
white	462018	463018
yellow	462118	463118
green	462218	463218
blue	462318	463318
red	462418	463418
black	462518	
orange	462618	463618

**Lens flat 15 x 15**

	Opaque	Transparent
white	462021	463021
yellow	462121	463121
green	462221	463221
blue	462321	463321
red	462421	463421
black	462521	
orange	462621	463621

**Lens concave 15 x 15**

	Opaque	Transparent
white	462022	463022
yellow	462122	463122
green	462222	463222
blue	462322	463322
red	462422	463422
black	462522	
orange	462622	463622

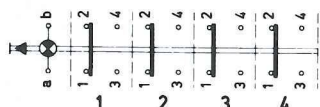
**COMMON INFORMATION**

For a brighter light, all transparent lens can be specified with a clear lower lens diffuser. Use 010 suffix (i.e. 461012 010).

The concealed bezel style is especially suitable for mimic diagrams and for mounting with lens immediately next to each other.

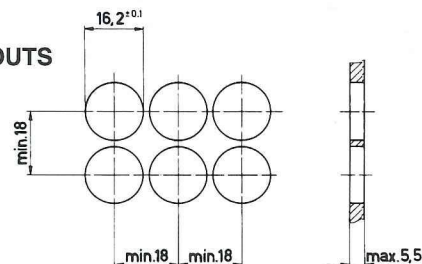
All maintained switches incorporate a bifunctional mechanism for changing the function from maintained to momentary and back again.

**WIRING DIAGRAM**



250V AC/5A (cos w 0.7)  
Lamp holder T 1 3/4 MG

**PANEL CUT-OUTS**



**Dimensional Data for behind panel**

Length = L	mm	Inches
Pole 1	27.5	1.083
Pole 2	36	1.417
Pole 3	44.5	1.752
Pole 4	53	2.087
Indicator lamp	23.5	.925

