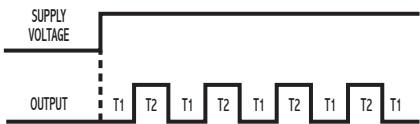


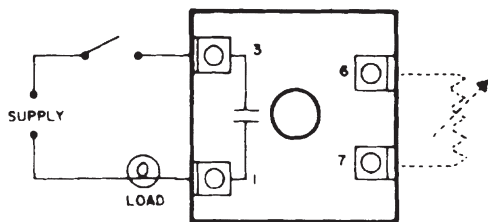
OPERATION

When power is applied, the OFF time begins. Upon completion of the OFF time, the load energizes and the ON time begins. Upon completion of the ON time, the load de-energizes and one cycle is complete. This OFF/ON cycling continues until the voltage is removed. THE OFF TIME ALWAYS EQUALS THE ON TIME.

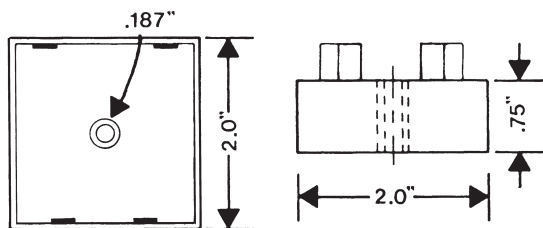


Flasher Solid-State Output

WIRING



DIMENSIONS (INCHES)



MODEL NUMBER

MODEL NUMBER	TSL		A		C	
SUPPLY VOLTAGE	24 VAC	24				
	120 VAC	120				
TYPE OF OPERATION	Fixed		F			
	External Resistor Adjustable; See page 73 for resistor selection.		R			
FLASH RATE	75 per Minute					75
	90 per Minute					90
	100 to 100 Adjustable					100*

Note: * The flash rate "100" option is only available in the "R" type of operation option.

SPECIFICATIONS

OUTPUT RATING Solid-state, SPST-N.O. 1 amp resistive;
 1 amp 25VA @ 24VAC
 1 amp 125VA @ 120VAC
 .5 amp 125VA @ 240 VAC

SUPPLY VOLTAGE 24 or 120 VAC, 50/60 Hz; ±10%

FALSE TRANSFER No

LOAD TYPE Resistive or incandescent only

FLASH RATE Factory preset (fixed) or external resistor adjustable from 10 to 100 flashes per minute.

TEMPERATURE RATING Operate 32° to 131°F (0° to +55°C)
 Storage -49° to 185°F (-45° to +85°C)

TERMINATIONS 1/4" quick disconnect terminals

WEIGHT NET: 1.28 oz Shipping: 1.6 oz.