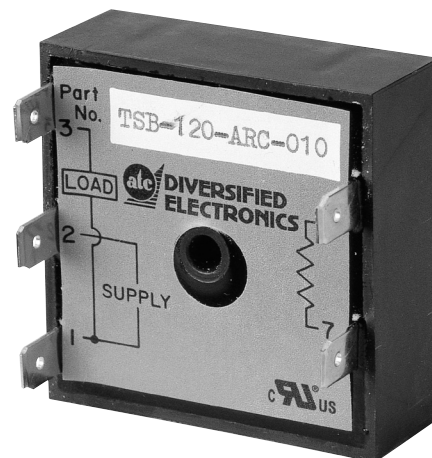
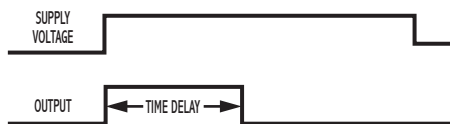


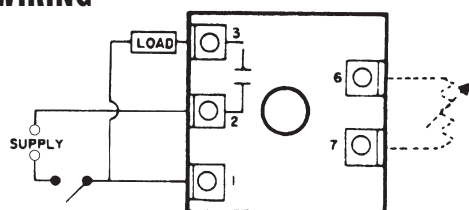
OPERATION

When voltage is applied to the input terminals, the load energizes and the time delay begins. Upon completion of the delay period, the load de-energizes. Reset during or after the delay period is accomplished by removal of the input voltage. The Series TSB is a three input terminal device.

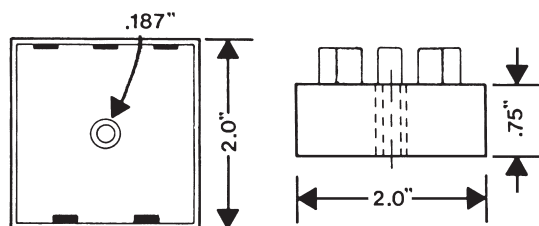


Interval Solid-State Output

WIRING



DIMENSIONS (INCHES)



MODEL NUMBER

MODEL NUMBER	TSB		A	C	
SUPPLY VOLTAGE					
24 VAC		24			
120 VAC		120			
240 VAC		240			
TYPE OF OPERATION					
Fixed (Factory Preset)			F		
External Resistor Adjustable; See page 77 for resistor selection.			R		
Screwdriver Adjustable (Not available with 240V)				S	
DELAY PERIOD	See page 77 for standard ranges available				

Example: TSB-120-ARC-100—Interval on operate, 120 Volts AC, external resistor adjustable from 1 to 100 seconds.

Note: *The TSB series is only UL recognized in the 120 VAC model.

SPECIFICATIONS

TIMING RANGES	Virtually unlimited. See page 73 for standard ranges available.
OUTPUT RATING	Solid-state, SPST-N.O. 1 amp resistive; 1 amp 25VA @ 24VAC 1 amp 125VA @ 120VAC .5 amp 125VA @ 240 VAC
TIMING TOLERANCES	Minimum Setting +0 – 20% Maximum Setting ±10%
REPEATABILITY	1% maximum; no first cycle effect
RESET TIMES	Before Time Out 100 mSEC After Time Out 50 mSEC
RECYCLE TIME	40 mSEC
SUPPLY VOLTAGE	24 to 240 ±10% VAC, 50/60 Hz
FALSE TRANSFER	No
ENCLOSURE	Surface mounted; totally encapsulated with a high quality epoxy for environmental protection.
TEMPERATURE RATING	Operate 32° to 131°F (0° to +55°C) Storage -49° to 185°F (-45° to +85°C)
TERMINATIONS	1/4" quick disconnect terminals
WEIGHT	NET: 1.28 oz Shipping: 1.6 oz.